

AGENDA
***REVISED 08-01-2013**
JEFFERSON COUNTY PARKS COMMITTEE

Jefferson County Courthouse
320 S Main Street, Rm 202
Jefferson WI 53549
August 5, 2013 @ 1:00 p.m.

Committee: Glen Borland, Mike Kelly, Rick Kuhlman, Steve Nass, Augie Tietz

1. Call to Order
2. Roll Call
3. Certification of Compliance with the Open Meetings Law
4. Review of the Agenda
5. Public Comment
6. Approval of the July 1, 2013 Meeting Minutes
7. Communications
 - a. Email Good News! Cheryl Housley – DNR – Watertown Outboarders Inc. property
 - b. Approval letter from Scott Walker re: Watertown Outboarders Inc. property
 - c. State Oks Recreational Land Purchase – Watertown Daily Times
 - d. On the Waterfront – The Daily Union Opinion Page
 - e. County Executive Announces \$73,015 Outdoor Recreation Grant for Cambridge Bicycle/Pedestrian Trail
 - f. Crave Family Bench Donation
 - g. Daily Union's Best of the Area Readers' Poll
 - h. Rock River Trail – Daily Union
 - i. Grant Award from Fort Atkinson Community Foundation for \$5,000 for Mason Log Home
 - j. Fort Foundation Grants Total \$767,000
 - k. Lure Coursing Event Planned – Jefferson County Living
 - l. Service Above Self – Daily Jefferson County Union
 - m. Upcoming events
8. Discussion and possible decision on Waterloo-Watertown Recreational Trail Plan
9. Presentation of Jefferson County Comprehensive Plan/Economic Development Emphasis/ Tourism
10. Consider Board Resolution accepting Quirk Foundation donation of \$25,000 to assist in the purchase of the Watertown Outboarders, Inc. property
11. Discussion on 2013 Parks Department Budget Financial Update
12. Discussion and possible decision on 2014 budget
13. Discussion and possible decision on distribution of County Parks, Recreation and Open Space Plan
14. ***Update on Glacial Heritage Area (GHA) Project**
15. Presentation of Korth Park Playground check by Rick Olson, Modern Woodman Financial
16. Set Tentative Meeting Dates/Times for: September 2, 2013 at 1:00 pm
17. Adjourn

The Committee may discuss and/or take action on any item specifically listed on the agenda.

Individuals requiring special accommodations for attendance at the meeting should contact the County Administrator at 920-674-7101; 24 hours prior to the meeting, so appropriate arrangements can be made.

JEFFERSON COUNTY PARKS COMMITTEE MINUTES

JEFFERSON COUNTY COURTHOUSE

320 S Main Street, Rm 202

Jefferson WI 53549

July 1, 2013 @1:00 p.m.

Committee: Glen Borland, Mike Kelly, Rick Kuhlman, Steve Nass, Augie Tietz

1. Call to Order

The meeting was called to order by Chairman Borland at 1:03 p.m.

2. Committee members present included: Borland, Kelly, Kuhlman, Nass and Tietz. Others present: Joe Nehmer, Jane Stanger, Kevin Wiesmann, Ben Wehmeier, John Molinaro. Others present: Margaret Burlingham, Ed Freer, Dale Neupert, Steve Duwe, Laura Cotting, Frankie Fuller

3. Certification of Compliance with the Open Meetings Law – In compliance

4. Review of the Agenda

5. Public Comment - None

6. Approval of the June 3, 2013 Meeting Minutes

Motion to approve the June 3, 2013 meeting minutes by Tietz, seconded by Kelly. Carried 4-0. Kuhlman Abstaining.

7. Communications

- a. Picnic in the Park at Korth Park Last Saturday – The Lake Mills Leader
- b. Inspired by 150-year-old oak, Woman Raising Money for Trees on Hwy 26 – Janesville Gazette
- c. 2 Rivers Bike Club Donates \$2,000 – Watertown Daily Times
- d. DNR is Eyeing Property Owned by Boating Club – Watertown Daily Times
- e. Discover Wisconsin video (played after Agenda Item 14)
- f. GHA Press Release, Second Annual Bike and Hike with the Artists – Friends of GHA
- g. Glacial Heritage Area News Release (Volume 1, Issue 1) – Friends of GHA
- h. Tour da Goose Bike Ride Set This Saturday in Watertown – Daily Union

8. Donation presentation by Brook Hartwig and Jenna Lovejoy from Dorothy Dash Fundraiser

The girls could not make the meeting and will present their donation at a later date.

9. Discussion and possible decision on County Parks, Recreation and Open Space Plan Update

Nehmer discussed the Executive Summary of the County Parks, Recreation and Open Space Plan. Margaret Burlingham, Landesign presented the updated County Parks, Recreation and Open Space Plan and reviewed the Executive Summary. The plan includes all the updates that have been done, proposed updates, and capital improvement plans. It notes the accomplishments the Parks Department has made which are many and we are proud of noted Burlingham.

Motion to approve the County Parks, Recreation and Open Space Plan update as presented July 1, 2013 by Kuhlman, seconded by Nass. Carried 5-0.

10. Discussion on Parks Department Financial Update

Nehmer discussed the Financials of the Parks Department. Everything is moving along as we anticipated. The 2013 Capital expenditures were discussed. The mower, trailer, and new truck have been purchased. The new shelter at Pohlman Park has been ordered. The landscaping is complete and the footings are in. The shipment of the shelter should be this week. The new bathroom is installed at the camping area at Carnes Park. We will be putting a well and pump in that same vicinity in the near future. Recreational equipment was discussed, playground at Korth Park.

Motion to approve the expenditures utilizing available funds for the recreational equipment at Korth Park made by Nass, seconded by Kuhlman. Carried 4-1 Borland No.

11. Discussion and possible decision on 2014 budget

Nehmer discussed the Capital Items that are being requested at this time for the Committees consideration. A discussion of the items ensued.

12. Discussion on proposed subdivision adjacent to Indian Mounds Park

Nehmer discussed the proposed subdivision which is located at the corner of Indian Mounds and Trail Park.

13. Discussion and possible decision on Waterloo-Watertown Recreational Trail Plan

Nehmer informed the committee that the final plan has been received. Mr. Ed Freer principal at Smith Group JIR of Madison, presented the plan to the committee. Mr. Steve Duwe of the Town of Milford expressed concerns that he and his neighbors have about the trail plan and safety as well.

14. Update on Land Acquisition, GHA River Based Conservation Area – The Wisconsin

Natural Resources Board approved the purchase of land currently owned by the Watertown Outboarders in a 6-1 vote during their monthly meeting in Wausau. Now the request

goes to the Governor for his signature. Recreational opportunities include shore fishing, handicap fishing, camping, and put in and take outs for canoes and kayaks. There is currently a boat launch there right now for motorized boats. This was accomplished with the help of the Earl and Eugenia Quirk Foundation's gift of \$25,000. Their gift was

very important to the board members at the Wausau meeting. This is the second time the foundation has funded a GHA initiative.

**The Discover Wisconsin of the Video was shown at this time pertaining to Jefferson County

15. Set Tentative Meeting Dates/Times for: August 5, 2013 at 1:00 pm

16. Adjourn

Motion to adjourn at 2:40 p.m. made by Kelly, seconded by Nass. Carried 5-0.

DRAFT

7a

Jane Stanger

From: Joe Nehmer
Sent: Thursday, July 11, 2013 8:33 AM
To: Kim Buchholz - Parks; Kevin Wiesmann; Jane Stanger; Benjamin Wehmeier
Subject: FW: PR 40173 - Watertown Outboarders, Inc. - Governor's Letter
Attachments: PR 40173 Governor's Letter.pdf

FYI – Good news, indeed!

From: Housley, Cheryl - DNR [<mailto:Cheryl.Housley@wisconsin.gov>]
Sent: Wednesday, July 10, 2013 9:41 AM
To: Augie Tietz; Joe Nehmer
Cc: Smith, Sharene J - DNR
Subject: FW: PR 40173 - Watertown Outboarders, Inc. - Governor's Letter

Good News!! Watertown Outboarders was approved by the Governor yesterday. I anticipate that we will close mid or late August as we still need to work out the 1-year lease back arrangement (meeting set for July 15 to discuss it).

Joe, Sharene Smith will be your contact regarding the County grant funds that are being contributed. You can email her on the address above or call her at (608)267-0570, once the County approves the transfer of the funds.

1

Thanks all
-Cheryl

Cheryl B. Housley
Realty Specialist WI-DNR
South Central Region
ph. (608)275-3314
fax (608)275-3338

From: Christianson, Kathleen M - DNR
Sent: Wednesday, July 10, 2013 9:28 AM
To: Aquino, Mark D - DNR; Phelan, Pamela K - DNR; Housley, Cheryl - DNR; DNR DL LF REAL ESTATE CO
Subject: PR 40173 - Watertown Outboarders, Inc. - Governor's Letter

The following transaction has been approved by the Governor and is on its way to Sharene for closing.


Program Assistant
Real Estate
Facilities & Lands
Wisconsin Department of Natural Resources
(📞) **phone:** (608) 266-0823

2

State of Wisconsin
DEPARTMENT OF NATURAL RESOURCES
101 S. Webster Street
Box 7921
Madison WI 53707-7921

JUN 28 2013

76
Scott Walker, Governor
Cathy Stepp, Secretary
Telephone 608-266-2621
FAX 608-267-3579
TTY Access via relay - 711



IN REPLY REFER TO: PR 40173

Honorable Scott Walker
Governor of Wisconsin
CAPITOL

Dear Governor Walker:

The Department requests your approval for a 6.13-acre land purchase from Watertown Outboarders Inc. pursuant to s. 23.091, Stats. The land is required for public recreation and resource management for the Glacial Heritage Area - River Based Conservation Area. There are sufficient funds appropriated to complete the purchase.

The file number is PR 40173 and the land is located in Jefferson County. Attached please find a memo and maps describing this transaction.

The Department has notified local elected officials and state representatives regarding this transaction and I have not received any objections. The Natural Resources Board approved the transaction at the June 2013 meeting.

I certify that this request for Governor's approval meets all applicable state and federal statutes, rules, regulations, and guidelines. This certification is based upon a thorough and complete analysis of this request.

If you concur with the proposed land transaction, please indicate your approval by signing this letter and returning it to us. Approval is requested by July 03, 2013. If additional information is needed, your office can contact Douglas J Haag at 608-266-2136.

Thank you for this consideration.

Sincerely,

Cathy Stepp
Secretary

Scott Walker

7-9-13
DATE

7c

State OKs recreational land purchase

By Jake Meister jakem@wdfimes.com | Posted: Thursday, July 11, 2013 12:49 pm

Gov. Scott Walker approved the Wisconsin Department of Natural Resources purchase of land from the Watertown Outboarders Wednesday.

A completed transaction awards the DNR the 6.13-acre property which is located just south of Watertown on the Rock River.

The reported purchase price of the land will be \$174,000.

"The land is required for public recreation and resource management for the Glacial Heritage Area -- River Based Conservation Area," Secretary Cathy Stepp said.

Keith Kuerschner, a Watertown Outboarders spokesman, said that the Watertown Outboarders have not discussed a new location for the club to this point and the topic will not be discussed at least until their next meeting.

"At this point we have to figure out the final details," Kuerschner said.

A closing date is expected in mid to late August and a one year lease back arrangement will need to be set. There will be a meeting Monday to discuss the process.

"The transfer will be a real asset for the people of Watertown and the glacial area," Jefferson County Parks Director Joe Nehmer said.

According to Nehmer, the property will eventually include numerous campsites, a boat recreation area and a location for canoeing and kayaking.

A \$25,000 contribution from the Quirk foundation will be used towards the purchase of the land provided the parks committee and Jefferson County board approves the use of the check.

Nehmer expects that both the committee and the board will happily approve the check's use.

"We're very happy about how things have gone and it's taken a long time to get this closed out," Jefferson County board member Augie Tietz said.

The Daily Union opinion page



W.D. HOARD
Founder, 1870

On the waterfront

Among the flurry of bills Gov. Walker signed into law last week was legislation designating a scenic driving route along the Rock River. It starts at the headwaters near the Horicon Marsh in Fond du Lac County and winds through southern Wisconsin and northern Illinois, where it flows into the Mississippi River at Rock Island, Ill. Of course, Fort Atkinson, Jefferson and Watertown are among the Jefferson County communities through which the Mighty Rock flows.

Authored by 15th District state Sen. Tim Cullen, the designation garnered solid support from both sides of the aisle, including our circulation area's elected officials: state Reps. John Jagler, Joel Kleefisch, Steve Nass and Andy Jorgensen, and Sens. Scott Fitzgerald and Neal Kedzie.

The driving route is part of a three-pronged approach to encourage more recreational use of the river and boost tourism. The first prong designated a water route for paddlers, boaters, anglers, and others showing access points and portage points. Recently added to the National Water Trails System, the Rock River Water Trail links 11 counties along 320 miles and marked the first national water trail between the two states.

The second prong is the newly enacted driving route, while the third will be a bicycling and hiking route. Plans call for promotional materials highlighting points of interest such as natural areas, historic sites and local attractions. Signage for the paddling, driving and biking routes eventually will be installed in both Wisconsin and Illinois.

Now, one might wonder what's the big deal, considering that people have been boating and fishing on the Rock River for centuries. While that is true, the river still remains a largely untapped recreational and economic resource. Having a more concerted effort to promote the corridor will not only lure more visitors to our communities, but also encourage more spending at local businesses such as restaurants, gas sta-

tions, hotels, bike shops, and sporting goods shops.

Think about it: A Rock River scenic trail along public highways through the river corridor will convey the motorist, cyclist and pedestrian to the scenic natural beauty of the Rock River basin and connect with other scenic trails, including the Grand Illinois Trail and Hennepin Canal State Trail in Illinois and the Glacial Drumlin State Trail, Glacial River County Trail and Ice Age National Scenic Trail in Wisconsin.

It also will be an educational resource. Bird watching in the Horicon Marsh, exploring the effigy mounds around Lake Koshkonong and bicycling trails that criss-cross glacier-carved landscapes and lush green farmland are but a handful of the countless opportunities available. From the Hoard Historical Museum's Lincoln-Bra Library in Fort Atkinson to the Milton House's underground railroad stop to Grand Detour's blacksmith shop of John Deere's pioneering steel plow, history is there for the learning.

Fact is, the Rock River corridor traces our predecessors' — and much of our state's — development. From the prehistoric peoples to Native Americans, explorers and early settlers to the industrialists, agriculturalists, statesmen and visionaries of more recent times, unique and significant contributions to the evolution of America have originated in the Rock River valley.

As Sen. Cullen points out, a commonality of interests and respect for the Rock River, conservation of natural resources in the river corridor and wise application of human talents can lead to revitalization of river communities and sustainable economic development for the benefit of present and future generations.

We thank the senator and all our representatives for promoting the Rock River Trail Initiative, and look forward to the myriad of benefits Jefferson County and its fellow river communities are certain to reap down the road.

From: Bob Salov [<mailto:rdsalov@frontier.com>]

Sent: Friday, July 12, 2013 2:04 PM

To: Becker, Casey

Cc: Mike Rumpf; struss@frontier.com

Subject: Re: NEWS RELEASE -- County Executive Announces \$73,015 Outdoor Recreation Grant for Cambridge Bicycle/Pedestrian Trail

Nice press release - thank you Casey

Bob

On 7/12/2013 1:05 PM, Becker, Casey wrote:

For Immediate Release

DATE: July 12th, 2013

Contact: Casey Slaughter Becker, Office of the County Executive (608) 267-8823 or cell (608) 843-8858

County Executive Announces \$73,015 Outdoor Recreation Grant for Cambridge Bicycle/Pedestrian Trail

One of 12 Projects Across the County Recommended for PARC Grants

Dane County Executive Joe Parisi announced today that the Dane County Park Commission has approved recommendation of nearly one million dollars in PARC grants for 12 projects that will partner the county with local communities to boost the outdoor recreation economy.

The awards include a \$73,015 grant for development of a bicycle/pedestrian trail in the Village of Cambridge.

The PARC program partners the county with local communities and organizations looking to invest in projects that will help them strengthen local economic development efforts through improvements to tourism, recreation, and conservation.

"Each of Dane County's communities have something special to offer residents, visitors, and businesses," said Parisi. "Our PARC grants partner the county with local governments and private organizations to further strengthen our outdoor recreation economy and our quality of life – from new biking and hiking trails to increased access to our great waterways."

Pending final approval by the Dane County Board, the county would award the Village of Cambridge \$73,015 to develop the first phase of a trail connection between Cam-Rock County Park and the Glacial Drumlin State Trail.

The project consists of developing a combination of a multi-use path and on-road bike route from the Cam-Rock trailhead in Cambridge to the Glacial Drumlin State Trail.

"This PARC grant will significantly augment the work of the Village of Cambridge's thriving economic development plan. A new TIF district has been established that incorporates the bike path connector between the Dane County Cam-Rock bike trail and the Glacier Drumlin trail," said Dane County Board Supervisor Bob Salov. "Thanks to Village President Steve Struss and the Cambridge Foundation for making this grant application a success. This grant boosts the economic development surge Cambridge is currently experiencing. The increased access from the Glacier Drumlin to the pristine Cam-Rock Park will significantly enhance tourism, recreation and the preservation of the beauty and natural environment enjoyed by residents and visitors to the Cambridge area."

This year's other PARC grant recommendations include funds for the development of a completion of Phase 3 of the Upper Yahara River Trail in the Village of DeForest; recreation and natural resource enhancements at Heritage Park in the Town of Dunn; construction of a boardwalk bicycle/pedestrian trail in the City of Fitchburg; construction of a segment of the Lower Yahara River Trail in the Village of McFarland; trail improvements at Tiedeman Pond and fishing enhancements at Lakeview Park in Middleton; major upgrades to the Lottes Park boat launch and riverwalk in Monona; upgraded boat launch and pier construction for Lake Kegonsa in the Town of Pleasant Springs; and construction of a bicycle/pedestrian path in the Village of Shorewood Hills.

PARC Grants were also recommended to local organizations, including funds for the Aldo Leopold Foundation for upgrades to the Aldo Leopold Nature Center in Monona, and funds for the Madison Skatepark Fund to help construct Madison's first outdoor concrete skate park.

PARC money awarded to the approved projects is matched on the local level by a local unit of government and or by the organization requesting the grant. In many cases, local supporters raise more money for their projects than the county's contribution.

Dane County Parks staff worked with the County Park Commission to rank all the PARC grant proposals. Grant money will be awarded this summer, pending the Dane County Board's final review of the Park Commission's funding recommendations.

A full summary of this year's PARC grant recommendations is attached.

###

Casey Slaughter Becker

Executive Assistant/Communications Director

5

Office of Dane County Executive Parisi

City-County Building

Room 421, 210 Martin Luther King Jr. Blvd

Madison WI 53703

(o) 608.267.8823

(c) 608.843.8858

(e) becker.casey@countyofdane.com

TO SIGN UP FOR E-NEWS FROM THE COUNTY EXEC, PLEASE VISIT US ONLINE.

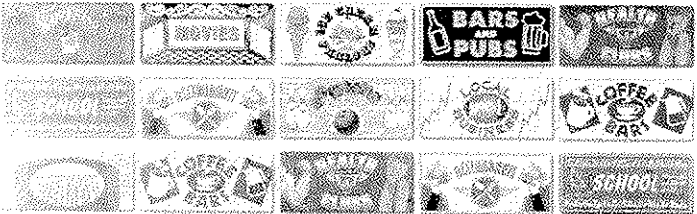




LISTEN TO THE SONG OF NATURE

Charles & Joni Crave Family
2013

Best OF THE AREA



Results are in — ‘Best of’ winners published

(Continued from page 19)

Best Fund-raising Event — Tomorrow's Hope in Jefferson was



voted to first place for the first time. The Jefferson Cab Rides for Seniors' breakfast fundraiser took second, landing on the board for the first time. Six-time winner, the American Cancer Society's Relay for Life fell to third.

Best Golf Course — Koshkonong Mounds Country Club scored an ace again, the club's fourth win



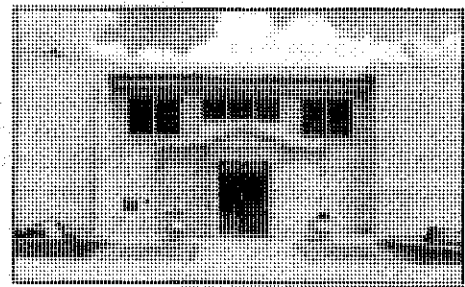
in this category. Spring Creek in Cold Spring hit a birdie in second, with Jefferson Golf Course chipping the ball up onto the green in third.

Best Haunted House/Halloween Adventure — “Where

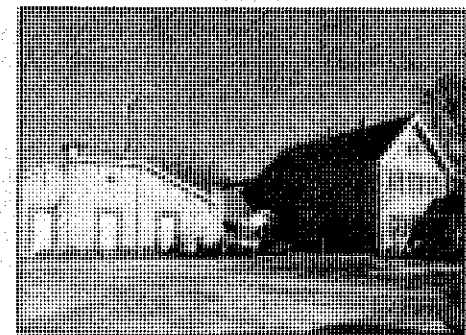


there is no imagination there is no horror.” - Arthur Conan Doyle, Sr. Jellystone Park's Dr. Scary's Haunted House was voted the area's scariest for the third year in a row. Fuzzy Pig's Shockwave Haunts in Whitewater lurked into second and Busy Barns squirmed in third.

Best Library — Voters chose seven-time winner Fort Atkinson's Dwight Foster Public Library as a primary information source. The Jefferson Public Library renewed second place with L.D. Fargo library in Lake Mills reserving a book in third.

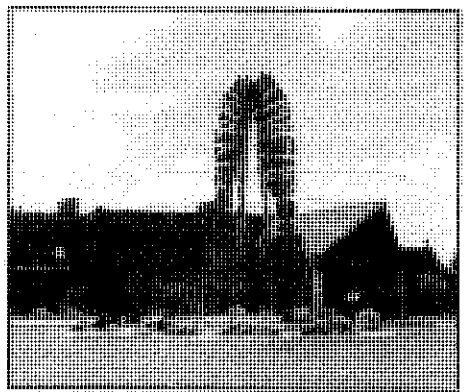


Best Museum/Historical Society — Our 27th seven-time winning exhibitor, the Hoard Historical Museum (which includes the Dairy Shrine and the Foster House) was voted top area museum. Jefferson Historical Society collected artifacts in second place, and Whitewater Depot displayed in third.



Best “Night on the Town” — Pictured below, voters named dinner and a show at The Fireside Dinner Theatre in Fort Atkinson the best night on the

town — for the seventh time. Helen-ville's Wingin' It boasts the second best night, with the Fort's Rhythm on the River earning a third place title.



Best Park — Another seven-time winner, Jones Park, located off Janesville Avenue in Fort Atkinson, got another home run. Jones Park, known as the area's premier baseball park,

(Continued on page 23)



Best ¹³ OF THE AREA

Votes cast determine winners

(Continued from page 22)
 also hosts Lions Club Corn & Chicken Roast, Community Cruise Nights and Baseball Fest. Fort's Rock River Park collected tallies for second. **Dorothy Carnes Park, west of Fort, received enough votes for third.**



for a Family Night
 ide Dinner Theatre
 t place in the area

for good, clean, family fun. Rock River Lanes/Kingpin Adventure Golf putted in second. Jefferson's Hwy 18 Outdoor Theatre entertained in third.



Best Place to Hang Out with Friends — Good food, drinks and entertainment helped Wingin' It won over our voters for the business' first win in this category. Paddy O'Coughlin's and the Filling Station took second and third.



Best Place to Hear Live Music — Fat Boyz of Fort Atkinson, a five-time Best of the Area winner, is the best music venue of 2013's. Café Carpe, also of Fort, is swinging in second with Rock Bottom, Jefferson, turning up the



volume in third.
Best Place to Watch the Big Game — In a five-year shutout, Sal's Sports Bar once again takes home the trophy. Wingin' It came in as an underdog for second, and Capn's Roadhouse kept its third place finish from last season.



Best Place to Watch the Sunset — Lake Koshkonong is apparently the place as all three of our top finishers hail from its banks. Sunset Bar & Grill received top honors for the tavern's view for the first time since its 2007 six-way tie for first. Voters enjoyed Koshkonong Mounds Country Club enough for second place. The general view west over Lake Koshkonong came in for a third place finish.



third year in a row, Anytime Fitness was voted the best place to get fit. Snap Fitness kept the same routine as last year and finished second. Crossfit used the principle of progression to move up to third.

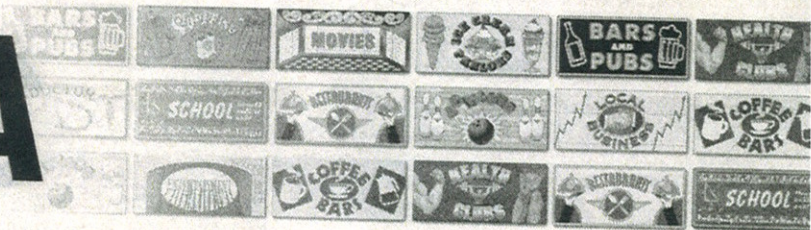


Best Thing for Adults to Do in the Area — Voters chose visiting the Glacial Heritage Bike Trail as the

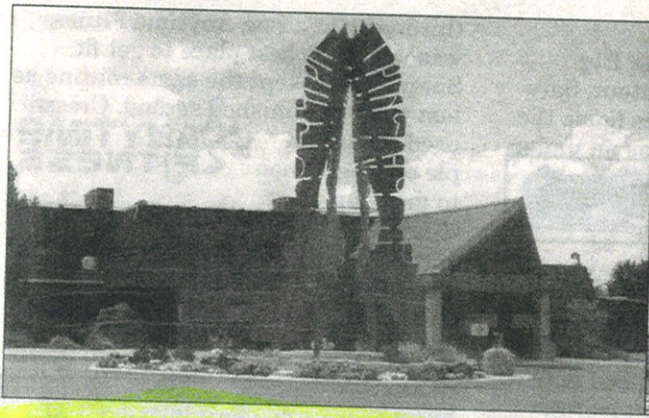
(Continued on page 26)



Best ^{'13} OF THE AREA



Seventh annual poll publishes results



number one activity for adults, whether it be for biking, walking or running. Voted second best thing for adults to do was visit various watering holes around the readership area, with golfing coming in third.

"Miscellaneous" division winners

Best Tourist Attraction — The top three attractions for visitors to the area, according to the 2013 "Best Of" poll are as follows:

- The Fireside Dinner Theatre, our last seven-time winner (pictured above)
- The Glacial Heritage Bike Trail

• Dorothy Carnes Park

Other entries that received a high number of votes: Jellystone Park, Lake Koshkonong and the Hoard Historical Museum.

Favorite Piece of Public Art/ Sculpture — Artist Gerry Sawyer's bronze Native Americans at the Main Street bridge in Fort Atkinson were voted as the favorite work of public art. Second place saw "Fireflies" (at the corner of Sherman and Robert streets), another of Sawyer's works. In third place stands the catcher at Jones Park. All three works

of art are in Fort Atkinson. One of Sawyer's bronze Native Americans can be seen above, center.

Most Attractive Building — The Dwight Foster Public Library in Fort Atkinson took first for the third year in a row, and is pictured above. Downtown Fort Atkinson's old Creamery Package building took second, with the Fireside Dinner Theatre finishing in third.

Best Improvement of the Year — Voters chose Heron's Landing, a new restaurant in Jefferson overlooking the Rock River, as the best area improve-

7h



ROCK RIVER TRAIL — On July 5, Wisconsin Governor Scott Walker signed into law legislation designating the Rock River Trail Scenic and Historic Route in Wisconsin. Shown above with the governor at the signing ceremony in the State Capitol in Madison are, from left, Greg Farnham, coordinator of the Rock River Trail Initiative; Kelley Flay, legislative assistant with Sen. Tim Cullen, D-Janesville, chief bill sponsor in the Senate; Cindy Brick, legislative assistant with Sen. Scott Fitzgerald, R-Juneau, bill co-sponsor and Senate majority leader; and state Rep. John Jagla, R-Waterloo, chief bill sponsor in the Assembly. Farnham is holding a new sign produced by the Wisconsin Department of Transportation that will be used for marking the road route in Rock, Dane, Jefferson, Dodge and Ford du Lac counties.



Where Gifts Today Build Better Tomorrows

July 22, 2013

Mr. Kevin Wiesmann, operations supervisor
Jefferson County Parks Department
320 South Main Street, Room 204
Jefferson, WI 53549

Dear Kevin,

At its July 8, 2013 meeting, the Board of Directors of the Fort Atkinson Community Foundation reviewed and discussed your grant request for \$5,000 to help restore the Mason Log Home located in Dorothy Carnes Park East.

I am pleased to inform you that the Board voted to provide up to \$5,000 for exactly this purpose. Our only stipulation is that you draw on the grant funds by June 30, 2015. If your timeframe should run beyond that date, you will be welcome to reapply for the funds.

This award will come from our Beautification Fund and will be payable to the Jefferson County Parks Department upon completion of the project. To initiate payment, please present an accounting of the fund-raising and actual project expenses to the foundation's office at 244 N. Main Street.

The Community Foundation would appreciate any public recognition of this grant including a press release or photograph for the local newspaper. If you have any questions, please contact our program administrator, Sue Hartwick, at (920) 563-3210 (office); (920) 222-1191 (mobile) or via email at facf@fortfoundation.org.

To accept this grant, we ask that you sign and date the letter below and return it to me in the enclosed envelope.

Sincerely yours,

Ronald J. Vogel, chairman
Fort Atkinson Community Foundation

Accepted on this 24th day of July, 2013

By: Kevin Wiesmann

Kevin Wiesmann, operations supervisor, Jefferson County Parks Department

7j

Fort Foundation grants total \$767,000

Posted: Thursday, July 25, 2013 8:08 am

The Fort Atkinson Community Foundation has approved nearly \$767,000 in grants to benefit the community.

During its July 8 meeting, the Fort Atkinson Community Foundation Board of Directors voted its support for grants totaling \$766,158.

Leading the list of five grant recipients is Rock River Heritage, which received \$750,000 to help renovate the Fort Atkinson Club building located at 211 S. Water St., East.

Rock River Heritage, a nonprofit organization formed to restore significant local historic sites, is undertaking a \$2.3 million renovation of the former Masonic Lodge in Fort Atkinson with the intention to make the unique riverfront building a hub of activity as a local community center.

The Fort Atkinson Club opened in 1913 in a building whose design was inspired by the award-winning Wisconsin Building at the 1904 St. Louis World's Fair. In addition to preserving this architecturally significant building, Rock River Heritage intends to open it up for use by the community — providing meeting spaces for local businesses, as well as community health, arts and education organizations serving youth, families and seniors. Its downtown location along the Rock River is expected to make it a prime venue for private parties.

A fund had been opened at the Fort Atkinson Community Foundation to receive donations for the Fort Atkinson Club project.

Also receiving a foundation grant is the Jefferson County Parks Department, which garnered \$5,000 to help restore the Mason log home in Dorothy Carnes County Park East.

The cabin, built in the 1850s, is an excellent example of the hand-hewn construction typical of pioneer architecture in this area during original settlement. The historic log home will be an added attraction for Fort Atkinson-area residents and visitors enjoying the trails, birds, garden plots and all that nearby Carnes Park has to offer.

The School District of Fort Atkinson is the recipient of \$4,708 to allow the new Fort Atkinson Schools Archery Club to purchase equipment so students can practice and participate in meets.

The club follows the National Archery in the Schools Program (NASP), which is one of the fastest-growing programs in the nation. Students participate by shooting arrows at targets in competition with other schools across the state. All the schools use the exact same equipment, ensuring an

7K

IN BRIEF

Lure coursing event planned

Lure coursing was developed in the early 70's as a sport for sighthounds, but any dog big or small that likes to chase will love lure coursing. Racing across a field free as the wind in the

quest of an artificial lure, it doesn't get any better than that. Jim Perry, dog training expert will explain how lure coursing works, and then the fun begins as your dog is welcome to try out this fun activity. This event will be held July 27 at the Jefferson

County Dog Park, Area 1 from 8 a.m. until ? Free to dogs with a 2013 Jefferson County Dog Park tag or a July 27th day pass receipt. For more information contact Jane Stanger at (920) 674-7260 or email janes@jeffersoncountywi.gov.



Submitted Photo



SERVICE ABOVE SELF — The Rotary Clubs of Fort Atkinson and Jefferson have joined forces to “adopt” a section of the recently expanded Glacial River Trail between their two cities. The Rotarians are in charge of keeping the section of trail neat and tidy, and they held their first litter pickup earlier this summer. Shown above is the sign designating the two clubs’ participation in the Adopt-a-Trail program through the Jefferson County Parks Department. — Steve Lewis photo.

7m



GHA SUMMER PICNIC

Saturday, August 24, 2013
10 AM – 3 PM
Korth County Park, Upper Shelter
W8930 Korth Lane
Lake Mills, WI 53551

Join us for a free summer lunch at beautiful Korth Park

- 10 AM – NOON: Rock Lake boat tour and guided prairie hike
 - NOON – 1:15 PM: Free lunch provided by the Friends of Glacial Heritage Area with short program
 - 1:30 – 3 PM: Rock Lake boat tour and guided prairie hike
- Silent auction, music, Korth geocache and children's games throughout the day

Visit our web site for updates and flyer: www.glacialheritagearea.org
Facebook: Glacial Heritage Area
RSVP: friendsofgha@gmail.com





Summer 2013 Education & Fun Event Series

June 1 - Dog Park Etiquette
Sorry we missed you!

June 30 - Which Dog? When?
Sorry we missed you!

July 27 - Lure Coursing

Don't know what Lure Coursing is? Jim Perry give us in introduction, then the fun begins as your dog is welcome to try out this fun activity.

Time: 8:00am until ?? **Location:** Area 1

Free to dogs with a 2013 Jefferson County Dog park tag
-or- July 27 Day pass receipt

August 24 - Canine Search and Rescue

A.J. Marhofke shares his experiences and will give us a demonstration.

Time: TBA **Location:** Area 3 water pump

Dog Dayz of Summer

Sunday, August 25, 2013
12:00 – 3:00 p.m.

Jefferson Family Aquatic Center
518 North Fifield Avenue
Jefferson

Come on out to enjoy a day at the pool solely for our canine friends! Enter your dog into one of the contests or just enjoy their splash! Fun for the whole family!

\$5 per Dog (suggested donation)

Proceeds to benefit the Jefferson County Dog Park!

Rules for the day:

- 🐾 All dogs must be under control of their owners at all times.
- 🐾 All dogs must be kept on a 6" or less leash except when in the pool.
- 🐾 Sorry, only dogs in the water!
- 🐾 All dogs must have proof of current vaccinations or municipal license.
- 🐾 Female dogs in any state of heat will not be admitted.
- 🐾 Protect your dog by bringing your own water bowl.
- 🐾 When giving treats do so in a way that doesn't cause fights with greedy onlookers.
- 🐾 You are responsible for "accidents" anywhere in the facility. Clean up bags will be provided.
- 🐾 Remember, it is rain or shine. Dress appropriately!
Watch out for dehydration in you and your pooch.
- 🐾 Kids under 12 must be accompanied by an adult.
- 🐾 Maximum of two (2) dogs per adult human.
- 🐾 Aggressive dogs will not be admitted.



SUPPORT THE RESTORATION OF
THE MASON LOG HOME
WITH A CHARITABLE DONATION.

Please accept my donation of \$

Amount

(Make checks payable to the Jefferson County Parks
Department- Mason Log Home Project)

Name

Address

Phone

Email

Mail this portion of the brochure to:

Mason Log Home Restoration
Jefferson County Parks Department
320 South Main Street, Room 204
Jefferson, WI 53549

*All contributions are tax deductible to the fullest
extent allowable by state and federal law.*

July 14th, 1862

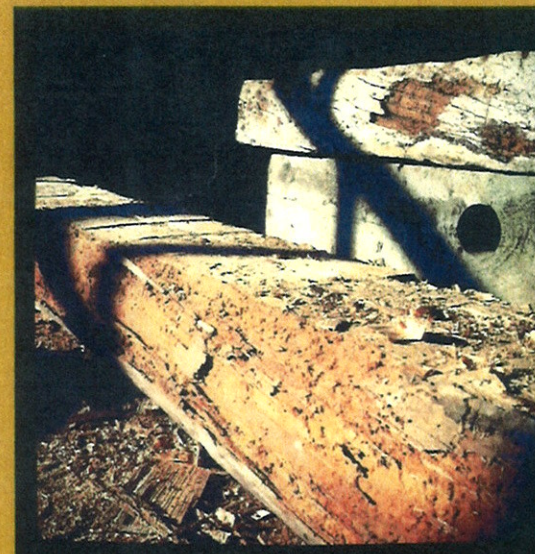
"Went and got six pigs at .50 cents
each. Finished hoeing potatoes. I
let R.C. Dodge have old bill to ride
to Lake Mills."

~ From the journals of Jeremiah Mason

Join us for the second annual Mason Jar Jamboree

Everyone is invited **Saturday
September 7th, from 11:00-
4:00** to The Mason Farm at
Carnes Park East. Visitors will
be greeted by bluegrass and folk
music, along with food,
educational programs, and kids
activities all afternoon. For more
information and directions to the
park log onto our webpage at:

www.jeffersoncountywi.gov/parks



MASON LOG HOME

RESTORATION AND PRESERVATION

*Help us to restore and
preserve a piece of
local history for all to
enjoy.*



August 23rd, 1862

"Hayed all day. I went to Fort in the evening to attend a war meeting. A man from Milwaukee spoke."

~ From the journals of Jeremiah Mason ~

Preserving Local History

Historical records show that the Mason log home was built sometime in the 1850's. This date was confirmed through newspapers found on the interior plaster of the cabin. One of the newspapers, The Republican, was found with an intact date of 1856. The Mason family lived in the log home from the early 1850's to 1868.

The family consisted of Elias Mason, Born 1784 and his second wife Lois, who was born in 1797. They lived in the log home with their three children, Elias Jr. born 1836, Jeremiah born 1838, and Francis born 1839. Elias Sr. died in 1858, and his wife Lois died in 1865. Their son Jeremiah continued to live in the house until 1868 before moving to Fort Atkinson. Throughout Jeremiah's tenure on the farm he kept a journal of



daily events ranging from fundraising for the Civil War to helping a neighbor raise a barn. These journals are now on file at the Wisconsin Historical Society.

Another unique fact about the property is in the original deed, which was granted to Mrs. Mason on January 26, 1850 at the Jefferson County Courthouse. During this period of Wisconsin History, it was in fact illegal for a married women to own property. The issue of married women's property rights was hotly contested around this time, and the first law that gave married women in Wisconsin the right to purchase real estate in their name was signed by the governor on February 1, 1850.

Why Here, Why Now?

Through the hard work of local volunteers and parks department staff, this project has continued to evolve and progress. A 2012 grant from the National Trust for Historic Preservation has allowed the Jefferson County Parks Department to complete a condition assessment and draft a restoration plan for the Log Home.



Jaren Borland and Craig Roost working logs during the restoration process, Summer 2013.

The Home has also been approved by the Jefferson County Historic Site Preservation Commission for Historic Land Mark Status. The location of the building on the current site at Dorothy Carnes Park allows the home to be easily accessible to the public. The intact journals of daily life on a farm in the 1850's make the site an incredible location for hands on interpretation and education of historical agricultural practices and social history in the late 1800's.

How Can You Help?

One way to help would be to **Volunteer** with the restoration project. If you are interested in volunteering contact the Jefferson County Parks Department at (920) 674-7260 and provide them with your availability and contact information.

Another way to help would be to make a **Charitable Donation** to the project fund. All donations will be directly used for project materials and contracted services. Donations are also considered tax deductible. Information on how to donate to this project is listed on the back of this brochure.

Business Unit	Description	Current Period Actual	Current Period Budget	YTD Actual	YTD Budget	Prorated Variance	Total Budget	Annual Remaining	Percentage Of Budget
1801 Parks	Revenue	(476.65)	(5,110.00)	(12,330.57)	(30,660.00)	18,329.43	(61,320.00)	(48,989.43)	20.11%
	Expenditures	86,912.16	83,998.57	460,304.21	503,991.42	(43,687.21)	1,007,982.83	547,678.62	45.67%
	Other Finances	-	-	-	-	-	-	-	#DIV/0!
	Total	86,435.51	78,888.57	447,973.64	473,331.42	(25,357.78)	946,662.83	498,689.19	47.32%
1806 Carol Liddle	Revenue	(5.55)	(16.67)	(52.50)	(100.00)	47.50	(200.00)	(147.50)	26.25%
	Expenditures	-	6,796.58	-	40,779.50	(40,779.50)	81,559.00	81,559.00	0.00%
	Other Finances	-	-	-	-	-	-	-	#DIV/0!
	Total	(5.55)	6,779.92	(52.50)	40,679.50	(40,732.00)	81,359.00	81,411.50	-0.06%
1809 Carlin Weld	Revenue	-	(8.33)	(26.13)	(50.00)	23.87	(100.00)	(73.87)	26.13%
	Expenditures	-	15.25	-	91.50	(91.50)	183.00	183.00	0.00%
	Other Finances	-	-	-	-	-	-	-	#DIV/0!
	Total	-	6.92	(26.13)	41.50	(67.63)	83.00	109.13	-31.48%
1811 Korth Park	Revenue	-	-	-	-	-	-	-	#DIV/0!
	Expenditures	-	-	-	-	-	-	-	#DIV/0!
	Other Finances	-	-	-	-	-	-	-	#DIV/0!
	Total	-	-	-	-	-	-	-	#DIV/0!
1812 Carnes Park	Revenue	(950.00)	(1,938.00)	(28,823.00)	(11,628.00)	(17,195.00)	(23,256.00)	5,567.00	123.94%
	Expenditures	652.50	7,903.75	3,937.44	47,422.50	(43,485.06)	94,845.00	90,907.56	4.15%
	Other Finances	-	1,379.42	-	8,276.50	(8,276.50)	16,553.00	16,553.00	0.00%
	Total	(297.50)	7,345.17	(24,885.56)	44,071.00	(68,956.56)	88,142.00	113,027.56	-28.23%
1813 Park Buildings	Revenue	-	-	-	-	-	-	-	#DIV/0!
	Expenditures	650.26	1,329.25	7,488.21	7,975.50	(487.29)	15,951.00	8,462.79	46.95%
	Other Finances	-	-	-	-	-	-	-	#DIV/0!
	Total	650.26	1,329.25	7,488.21	7,975.50	(487.29)	15,951.00	8,462.79	46.95%
1814 Garman Nature	Revenue	-	-	-	-	-	-	-	#DIV/0!
	Expenditures	-	-	12,686.27	-	12,686.27	-	(12,686.27)	#DIV/0!
	Other Finances	-	1,074.50	-	6,447.00	(6,447.00)	12,894.00	12,894.00	0.00%
	Total	-	1,074.50	12,686.27	6,447.00	6,239.27	12,894.00	207.73	98.39%
1816 Glacial Heritage	Revenue	-	-	-	-	-	-	-	#DIV/0!
	Expenditures	-	1,212.75	-	7,276.50	(7,276.50)	14,553.00	14,553.00	0.00%
	Other Finances	-	833.33	-	5,000.00	(5,000.00)	10,000.00	10,000.00	0.00%
	Total	-	2,046.08	-	12,276.50	(12,276.50)	24,553.00	24,553.00	0.00%
1821 Snowmobile Trails	Revenue	-	(3,806.25)	(21,229.85)	(22,837.50)	1,607.65	(45,675.00)	(24,445.15)	46.48%
	Expenditures	42,614.46	3,806.25	42,614.46	22,837.50	19,776.96	45,675.00	3,060.54	93.30%
	Other Finances	-	-	-	-	-	-	-	#DIV/0!
	Total	42,614.46	-	21,384.61	-	21,384.61	-	(21,384.61)	#DIV/0!
1824 Bike Trail	Revenue	(473.92)	(41.67)	(607.57)	(250.00)	(357.57)	(500.00)	107.57	121.51%
	Expenditures	1,116.93	41.67	2,516.93	250.00	2,266.93	500.00	(2,016.93)	503.39%
	Other Finances	-	175.00	-	1,050.00	(1,050.00)	2,100.00	2,100.00	0.00%
	Total	643.01	175.00	1,909.36	1,050.00	859.36	2,100.00	190.64	90.92%
1826 Dog Park	Revenue	(1,351.08)	(2,720.08)	(24,023.73)	(16,320.50)	(7,703.23)	(32,641.00)	(8,617.27)	73.60%
	Expenditures	1,255.34	2,720.08	9,217.02	16,320.50	(7,103.48)	32,641.00	23,423.98	28.24%
	Other Finances	-	1,777.58	-	10,665.50	(10,665.50)	21,331.00	21,331.00	0.00%
	Total	(95.74)	1,777.58	(14,806.71)	10,665.50	(25,472.21)	21,331.00	36,137.71	-69.41%
1840 Groundskeeping	Revenue	(5,910.47)	(5,116.17)	(16,987.74)	(30,697.00)	13,709.26	(61,394.00)	(44,406.26)	27.67%
	Expenditures	7,135.02	5,121.90	18,192.30	30,731.38	(12,539.08)	61,462.75	43,270.45	29.60%
	Other Finances	-	-	-	-	-	-	-	#DIV/0!
	Total	1,204.55	5.73	1,204.56	34.38	1,170.19	68.75	(1,135.81)	1752.09%
Total All Business Units	Revenue	(9,167.67)	(18,757.17)	(104,081.09)	(112,543.00)	8,461.91	(225,086.00)	(121,004.91)	46.24%
	Expenditures	140,316.67	112,946.05	556,956.84	677,676.29	(120,719.45)	1,355,352.58	798,395.74	41.09%
	Other Finances	-	5,239.83	-	31,439.00	(31,439.00)	62,878.00	62,878.00	0.00%
Grand Total Parks	131,149.00	99,428.72	452,675.75	596,572.29	(143,696.54)	1,193,144.58	740,268.83	37.96%	

2014 PARKS DEPARTMENT CAPITAL ITEMS

Priority	Description	Amount
1	Purchase Groomer/drag/tracks (1801)	\$40,000
2	Create 9 hole disc golf course at Carlin Park (1809)	\$10,000
3	Replace Trailer (for facilities/groundskeeping) (1840)	\$5,000
4	Install well at Garman (1814)	\$13,000
5	Purchase a UTV (replace 4-wheeler) (1801)	\$15,000
6	Recreational Equipment-Park System (Pohlmann, Welcome Travelers, systemwide) (1801)	\$45,000
7	Replacement Mower (1840)	\$22,000
8	Implementation of Carnes Master Plan - East (parking lot, 4 wildlife viewing blinds) (1812)	\$75,000
		Total \$225,000

2013 Capital Budget - \$219,600

Proposal would link bike paths

By David Brazy davidb@wdtimes.com | Posted: Friday, August 2, 2013 11:33 am

Officials from Jefferson and Waukesha counties, the city of Watertown, We Energies and the American Transmission Company met Thursday morning to discuss plans for a proposed 11-mile long bike path from Watertown to Oconomowoc. The 11-mile section is part of a larger plan to connect bike trails to allow riders to travel from Madison to the lakefront in Milwaukee on one continuous path.

With so many different private businesses and different governmental agencies, the plan is understandably complex.

Augie Tietz, Jefferson County supervisor and Glacial Heritage Area Trails leader, said the proposed bike path would run from the corner of Humboldt and Clark streets to Oconomowoc. Once the trail hits Oconomowoc it would hook up with the Lake County Trail and continue to run east through Waukesha County. The trail would cross 12 roads, have two bridges over the Rock River and would cost between \$4.64 million and \$5.4 million. The path would run along a strip of land owned by We Energies, known as a right of way, through Jefferson and into Waukesha counties.

Tietz said they are hoping to receive grant funding to pay for 100 percent of the project, with 20 percent coming from a Wisconsin Department of Natural Resources Stewardship grant and 80 percent coming from a Wisconsin Department of Transportation T-grant.

However, Tietz said they have hit a road block with the DNR over the licensing agreement for the utility corridor with We Energies. The DNR has requested a 25-year license agreement for the right of way, but We Energies policy is to offer a five-year renewable license to municipalities to allow them to use the utility corridor for recreational purposes.

We Energies real estate associate Julie Simmons said the company has always offered a five-year license.

"We own a major power plant along the way and we have a lot of gas lines that run underneath this land, ATC has a lot of electrical poles above ground. We don't know more than five or 10 years out what we will be doing (along the right of way). If we try to sign a 20- or 25-year lease and we can't use the right of way for the work we might have to go out and get easements, which could cost millions of dollars," Simmons said. "I think both We Energies and ATC both feel very strongly that we want to help you get your trail in. We know you are facing a lot of challenges with what's going on, so whatever we can do to help that is within our boundaries we will."

We Energies is also concerned that if they would have to go in and do any work on their gas lines or at the power plant, the company would have to pay for any damages done to the trail.

"We are very excited to help, we have hundreds of miles of rec property on our lands, but that is a cost and nobody really wants to have to pay for that," Simmons said. "It's a tough decision, and we don't anticipate it happening, but this is our policy."

Further complicating matters ATC, which also uses the We Energies right of way, is planning a major construction project to update its power lines.

However, Mary Carpenter, senior local relations representative with ATC, told the gathered officials she didn't believe the bike plans would interfere with the ATC's plans to upgrade their power lines from Hartford to Watertown and from Watertown to Oconomowoc.

Transmission Line Project Engineer Todd Maersch said he would request Jefferson County wait until the new power lines are installed by ATC before they would begin construction on the bike path.

"We will damage the trail if we were to put new facilities in ... from our standpoint it would be more advantageous if this thing were to go ahead, if you could hold off so we can get in and do our work first. Then we won't have to deal with that particular constructive equipment damage. Our equipment is quite a bit heavier than the We Energies equipment. We would hate to see a new trail go in and see it damaged or destroyed," Maersch said.

He added the company is still in the planning stage for the construction but the work should be completed from 2014 to 2016.

Jefferson County Parks Director Joe Nehmer said his office is continuing to work with the DNR with the hope that there will be some flexibility in the licensing agreement but said they don't know what the outcome will be with that. Tietz said the policies for the DNR's Stewardship grants have not changed, but the interpretation of those rules has changed.

Nehmer said this bike trail is part of the larger work with the Glacial Heritage Area, which he said is the most significant conservation and recreation undertaking in the state's history.

"Bike trails are always popular. If you build it they will come and probably more people than you anticipate ... We have planned this for the better part of 12 or 13 years with the DNR. We have been slowly acquiring some conservation land," Nehmer said. "We are also working on these linking trails, This segment from Oconomowoc to Watertown is part of a bigger picture, we would like to take the line from the west side of Watertown to Waterloo and we are also working with Dane County and state representatives to take the line from Waterloo to the east side of Madison. At that stage of the game, should we be fortunate enough to be able to put that in, you would be able to go from Madison to the lake front in Milwaukee on a continuous bike trail."

The gathered officials agreed their next step would be to send a letter from Jefferson and Waukesha counties, Watertown and Oconomowoc asking the DNR to request an amendment to the 25-year agreement.

Tietz said after the meeting he felt like they took some positive steps Thursday.

"We really made some positive traction today. If we could bring all these municipalities together I think it can really give us some impact," Tietz said.

Letters to the editor

GREAT APPRECIATION

Editor, Daily Union: Modern Woodmen of America Chapter 401 recently joined hands with the Jefferson County Parks Department and held a Picnic In the Park fundraiser to raise money to install playground equipment at Korth Park outside of Lake Mills.

It was a great day enjoyed by all who attended for games, a magic show, bluegrass music, food and beverages along with silent auctions and raffles.

To those helping this event be a success, we would like to thank: Kmart, 2 Rivers Bicycle and Outdoors, Fort Car Wash, Blue Moon, Cost Cutters, Goodyear Tire Service, Lakeland Chevrolet and Buick, Havill-Spoerl, Subway, Busy Barns Farm, Jefferson Golf Club, Havill of Jefferson, Spring Creek Golf Center, Family Video, El Mariachi, Lewis Station Winery, Crimson Salon, Goyer Ace Hardware, Nasco, Jody Wolfram, Lori Wiesmann, American Legion of Lake Mills, Sentry of Lake Mills, Sentry of Fort Atkinson, Pick 'n Save of Fort Atkinson, Cindy Klokow and Sportsman Pub of Lake Mills.

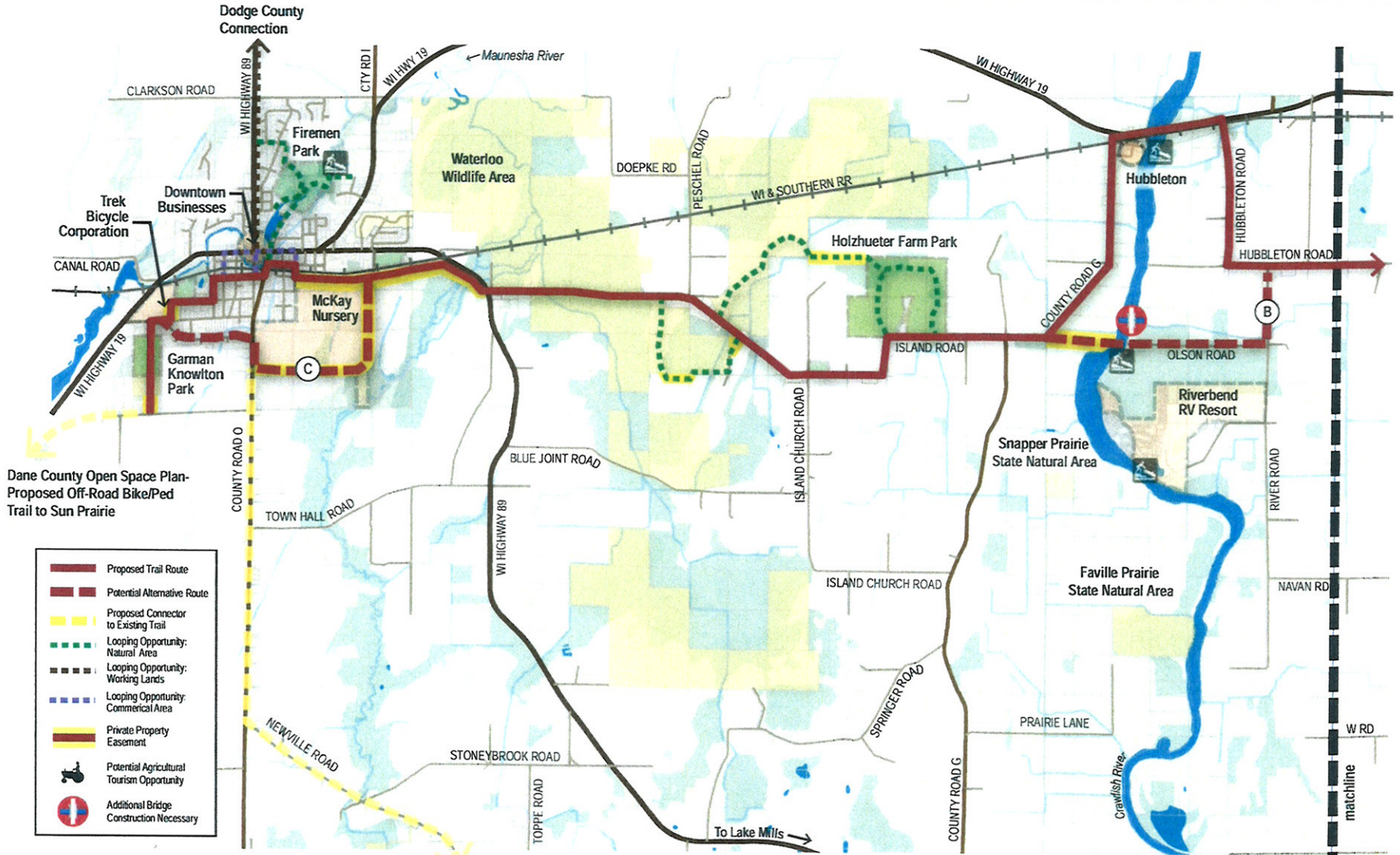
Also a big thank you to: Danny Frey, Ace Hardware of Lake Mills, the Jefferson County Sheriffs Office/Restorative Arts Program, Jefferson County Literacy Council, Policarpo Villanueva, Eddie Hudson, Brant's Precision Auto Body, Kurt Kenas, Lake Mills Community Foundation, W&A Distribution.

Also, Claussen Funeral Home, Seljan Company, Walmart of Jefferson, Crystal Farms of Lake Mills, Humphrey Floral and Gift, Tuttle's Hallmark, Studio 8, Best Little Hair House, Pepsi, Kwik Trip of Johnson Creek, and Culver's of Johnson Creek and Fort Atkinson.

We would also like to thank all the volunteer workers that helped make this event a success, along with anyone we might have forgotten to mention.

It is because of businesses and individuals like these that allows us to continue to do successful fundraisers for our local communities. We can't express our appreciation enough for all those who continue to help us! — Sincerely, Rick and Mary Olson, Modern Woodmen of America.

PREFERRED ROUTING PLAN



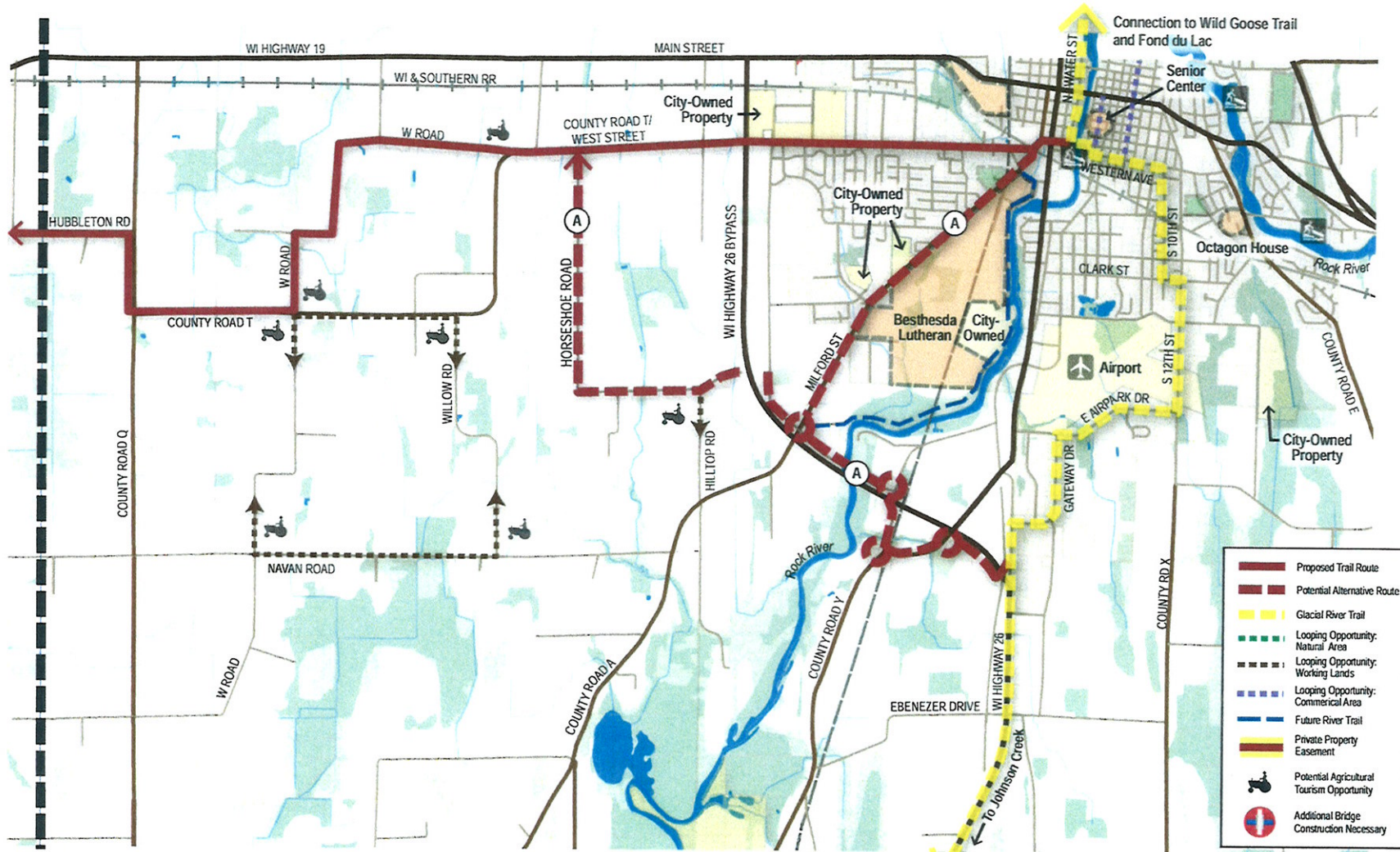
Dane County Open Space Plan
Proposed Off-Road Bike/Ped
Trail to Sun Prairie

- Proposed Trail Route
- Potential Alternative Route
- Proposed Connector to Existing Trail
- Looping Opportunity: Natural Area
- Looping Opportunity: Working Lands
- Looping Opportunity: Commercial Area
- Private Property Easement
- Potential Agricultural Tourism Opportunity
- Additional Bridge Construction Necessary

WATERLOO TO WATERTOWN RECREATIONAL TRAIL PLAN: Waterloo Section Routing 2.7.13

Connection to Glacial Drumlin Trail and Lake Mills





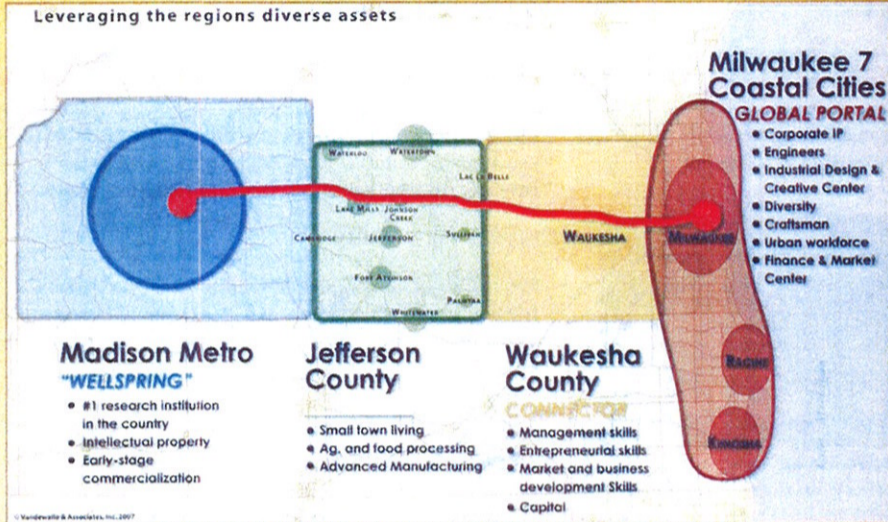
WATERLOO TO WATERTOWN RECREATIONAL TRAIL PLAN
Watertown Section Routing 1.18.13

Glacial River Trail
 Connection to Glacial Drumlin Trail



JEFFERSON COUNTY PLAN BACKGROUND

In 1999, Jefferson County adopted the Agricultural Preservation and Land Use Plan – the first of its kind in Wisconsin. According to Wisconsin's Comprehensive Planning Law, each community's adopted comprehensive plan must be updated at least every 10 years. Due to the high interest in promoting economic development in Jefferson County, the Jefferson County Economic Development Consortium (JCEDC) was created and serves as the lead economic development organization in Jefferson County. Formed in 2003, the JCEDC took the lead in updating Jefferson County's Comprehensive Plan through an economic emphasis approach. A two-phase process was developed that allowed for the creation of an economic vision in Phase 1 and an assessment of and recommendations for updating the 1999 Comprehensive Plan. The process and plan are referred to as the Jefferson County Comprehensive Plan Update (with Economic Development Emphasis). This poster is a summary of that approved plan.



Economic Development Vision:

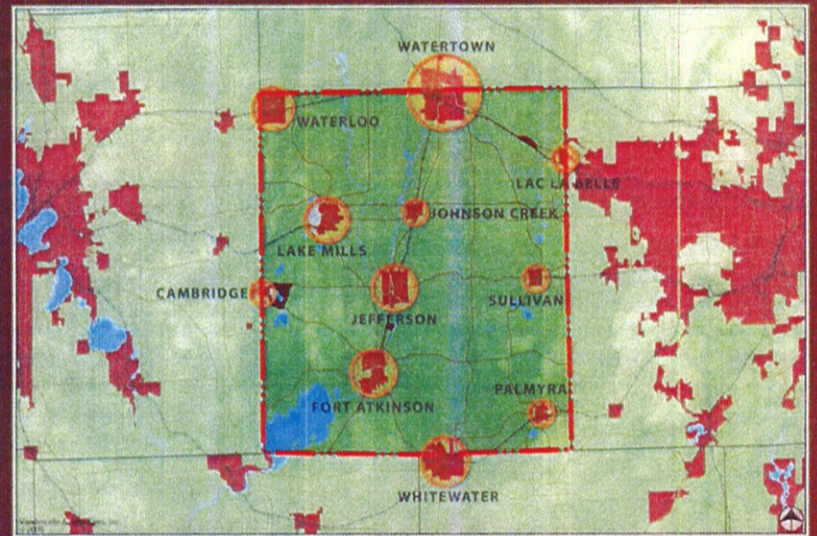
Jefferson County will be a leader in home-grown business development and innovation linkage, agricultural enterprises and healthy, small-town living.

Jefferson County WISCONSIN

COMPREHENSIVE PLAN

WITH ECONOMIC DEVELOPMENT EMPHASIS

As Amended Thru February, 2012



Located in the southeastern corner of Wisconsin between Madison and Milwaukee, Jefferson County is replete with exciting communities, breathtaking scenery, and economic opportunity. The County has a rich history in agriculture, offers vibrant small-town living, and is poised for economic growth.

This "Poster Plan" serves as a summary of key concepts from Jefferson County's Comprehensive Plan with Economic Development Emphasis. More information can be found by visiting Jefferson County's website at:

www.jeffersoncountywi.gov

Key Focus Areas



The "Key Focus Areas" summarize the consensus Vision Statements into three broad topics.

HOME-GROWN BUSINESS & INNOVATION

- The County, the UW-System and UW-Whitewater will have a network of higher education, government and business communities focused on innovative forces.
- We will have new international markets based on opportunities in India, China and other countries.
- We will have a diverse mix of manufacturing industries recognizing our prominence in advanced manufacturing, food products, the service and health care sectors, while taking advantage of our proximity to knowledge and innovation centers in Milwaukee and Madison.

How Do We Do This?

- Create a new network for innovation among the university and college systems and the business community.
- Focus economic development energy and capacity to support existing small and mid-sized companies, grow new markets and expand strategic alliances.



ENTERPRISING AGRICULTURE

- The County will have a continued foundation of commercial agriculture complemented by niche and value-added agribusiness, food processing bioenergy and new food businesses to address the market responsiveness of Jefferson County agriculture to the region and the world.

How Do We Do This?

- Advance the Jefferson County Agricultural Preservation and Land Use Plan Update (Farmland Preservation Plan).
- Create a regional and local food initiative with strategies aimed at developing an organic and local food cluster.
- Explore opportunities to source Jefferson County grown products in institutions, hospitals, school districts, and major employers; and look into other ways to grow the local food processing cluster.

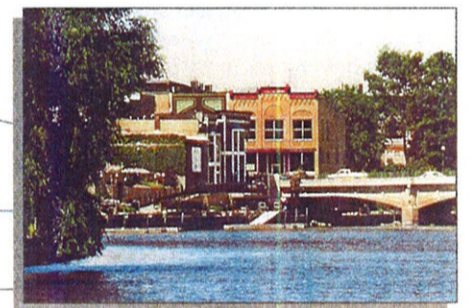


SMALL TOWN MAGNETISM

- We will have a foundation of long-time established businesses that value and are committed to their Jefferson County and local community presence.
- The County will have new large natural resource-oriented parks connected by a network of bike paths, trails and silent sport recreation destinations, and will have an authentic and innovative package of tourism attractions linked by a comprehensive County wayfinding system.
- We will have strong community centers or "destination downtowns" in each of the communities that comprise the "heart and soul" of the community and that contribute to the economic health through destination retail.

How Do We Do This?

- Focus on downtown reinvestment, redevelopment, and increasing downtown vitality.
- Advance the Glacial Heritage Area Plan, incorporating community destinations as a key component of the system.



How Do We Do This? refers to:

Catalytic Strategies in the Plan. The "catalytic strategies" are specific initial activities that could represent the first steps toward localizing a strong and competitive economic vision in Jefferson County and its communities.

Thank you to our Contributors:

- Jefferson County Executive
- Jefferson County Board of Supervisors
- Jefferson County Economic Development
- Jefferson County Land Use/Planning Department
- 1000 Lakeshore, Jefferson County, WI
- Lakeview by Maroon Park/Johnson
- Wisconsin State University

Implementation Road Map

CONSENSUS ECONOMIC VISION STATEMENTS BY TOPIC

The detailed vision statements listed below lay out the agreed-upon road map for a positive economic future in Jefferson County and its communities. Successful implementation will require multiple "players" to find their unique roles in developing initiatives and "doable" actions to move toward these ideas.

Implementation of the economic development vision is not the primary responsibility of any single jurisdiction. Instead, this plan invites and hopes to engage government leaders, nonprofit organizations, private sector corporations, educational institutions, economic development entities, and the general citizenry to respond with meaningful strategies. More detail is provided in the full plan.



ADVANCED MANUFACTURING, ENERGY AND ELECTRICAL TECHNOLOGY

Balance and Mix

- We will have a diverse mix of manufacturing industries recognizing our prominence in advanced manufacturing, food products, the service and health care sectors, while taking advantage of our proximity to knowledge and innovation centers in Milwaukee and Madison.

Established Corporate Presence

- We will have a foundation of long-time established businesses that value and are committed to their Jefferson County and local community presence as 76% of businesses have been in operation for over 20 years.

TOURISM

Glacial Heritage Area

- The County will have new large natural resource-oriented parks (conservation parks or "pearls") connected by a network of bike paths and trails (strings) to each park and Jefferson County community.



Silent Sports

- We will have facilities and activities for high participation "Silent Sports" and recreation destinations that respond to emerging and changing demands (including hiking, paddling, wildlife viewing, fishing, biking and others.)

Biking

- We will have recognizable and identifiable bike loops and connections customized for a variety of users (i.e. families, youth and enthusiasts).

Packaging Key Features

- We will have authentic and innovative tourism opportunities packaged in themes.

INNOVATIVE CONNECTIONS

Networks for Innovation

- A network (including higher education institutions, the JCEDC, and many Jefferson County communities) will focus on utilizing innovative forces already in the region.

New Markets

- We will have a network of five or six leading companies to collaborate and focus on innovation and new directions for business growth.



International Markets

- We will have new international markets based on opportunities in India, China and other countries.

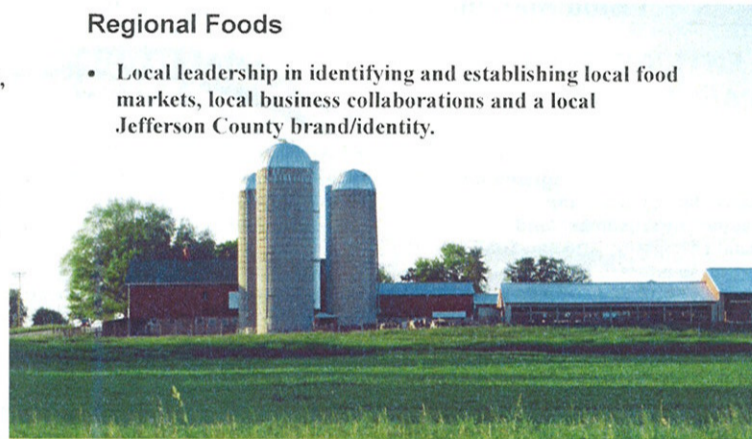
AGRICULTURAL ENTERPRISES

Agricultural Mix and Size

- The County will have a continued foundation of commercial agriculture complemented by niche and value-added agribusiness, food processing, bioenergy and new food businesses to address the market responsiveness of Jefferson County agriculture to the region and the world.
- A protected agricultural land base with viable large agricultural districts where modern agricultural technology and practices can occur.

Regional Foods

- Local leadership in identifying and establishing local food markets, local business collaborations and a local Jefferson County brand/identity.



SMALL-TOWN LIVING

Downtowns

- We will have strong community centers or "destination downtowns" that comprise the "heart and soul" of the community and that contribute to economic health through destination retail, heritage and civic pride.

Community Vitality

- We will have all the good things of a city in a small town atmosphere and characteristics that draw people to this area including strong local character, community identity, and authenticity.

BIOENERGY

Bioenergy Markets

- The County will have clusters of business related to bioenergy and associated market and commodity exchanges.

HEALTH CARE AND HEALTHY LIVING

Health Care

- We will have an integrated health care system for major hospital care and other patient needs and support.

Healthy Living

- We will have citizenry embracing a wellness/fitness lifestyle and a cultural and physical environment exhibiting healthy living.

SUSTAINABILITY

- The Plan also contains a Topic Section on "Sustainable Systems". While no consensus vision statements were developed, the topic was framed around the need to develop innovative county-wide energy, transportation, water resource and systems approaches to help businesses and communities become more energy efficient and sustainable.

For more detailed information and the full Comprehensive Plan, see Jefferson County's website:

www.jeffersoncountywi.gov



The Jefferson County Comprehensive Plan (called the Jefferson County Agricultural Preservation and Land Use Plan) was approved in October 1999. Jefferson County is required to re-certify its Farmland Preservation Plan every 10 years according to State Statute and the State of Wisconsin Working Land Initiative. This Plan Update is in response to that amendment requirement. The visions and values set forth in the 1999 Plan were re-affirmed during the public input process for the 2012 plan. Modifications were made to the urban service area portion of the Agricultural Preservation section of the Comprehensive Plan as required by State Statute.

Rural Residential Development Policies:

- Rural residential lots require rezoning from A-1 to A-3.
- 2 acre maximum residential lot size (except for lot combinations).
- Clustering of new residential lots recommended.
- Some Towns may be more restrictive.

Agricultural Land Preservation Policies:

- Active Purchase of Agricultural Conservation Easements (PACE) program with assistance from matching grants.
- Support future Agricultural Enterprise Area (AEA) applications.
- Retain A-1 exclusive agricultural zoning.

Approach for Allowing New Housing

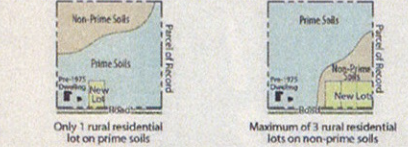
Parcel of Record Greater than 50 Acres with Existing Dwelling

Non-Prime Soils Inaccessible or All Prime Soils Non-Prime Soils Accessible

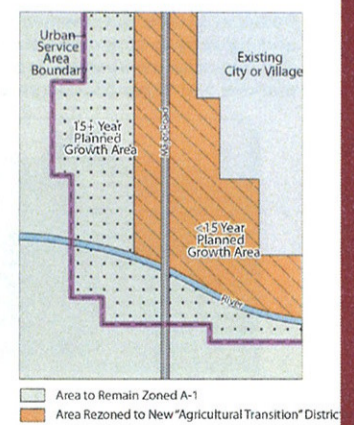


Parcel of Record Less than 50 Acres with Existing Dwelling

Non-Prime Soils Inaccessible or All Prime Soils Non-Prime Soils Accessible



Approach to Urban Service Areas



Graphics courtesy of: VANDEWALLE & ASSOCIATES INC. © 2011